



COLE'S
ESTATE AGENTS



COLE'S
ESTATE AGENTS

ons Hill, Hartfield

£425,000

Description

An attractive two / three bedroom cottage situated on the fringes of this highly sought after village. Accommodation comprises two bedrooms plus an additional cot room/walk in wardrobe, a sitting room with log burner, kitchen and bathroom. Further benefits include pretty front and rear gardens, parking and no onward chain.

Key Features

- Two Bedrooms + Cot Room / Study
- Period Cottage
- Charming Gardens
- Sought After Village Location
- Parking
- No Ongoing Chain

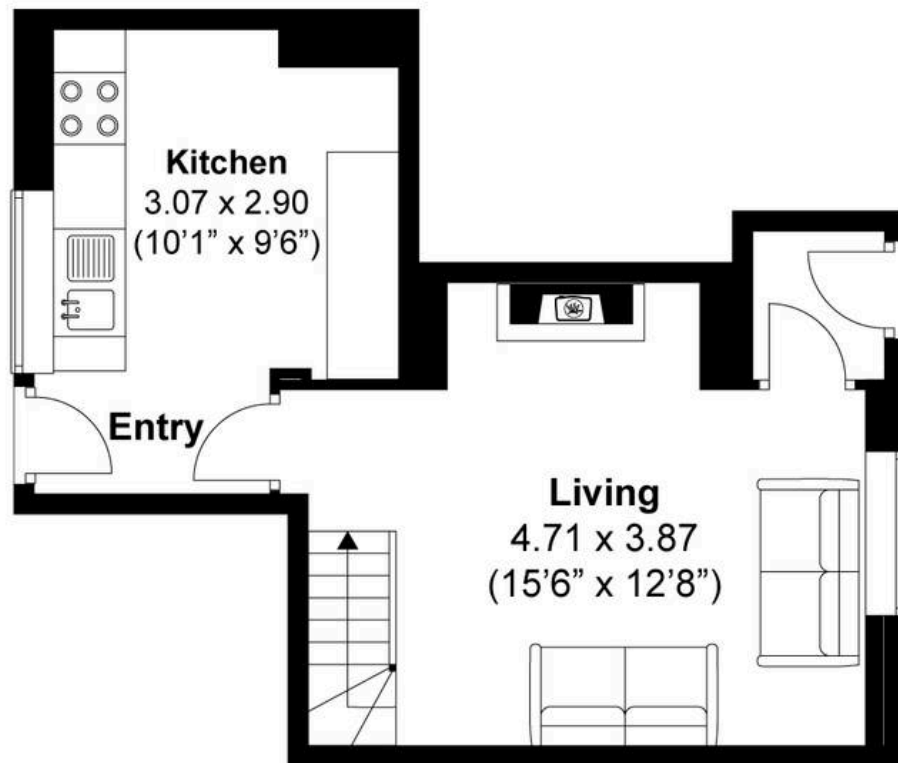
Location

Hartfield is famous for being the home of A.A. Milne, author of the Winnie the Pooh books and location of "Poohsticks Bridge". Countess Cottage is situated near to the centre of the village, which is surrounded by beautiful Sussex countryside and an abundance of wildlife. The village itself has shops catering for everyday needs including a village shop, butchers, doctors surgery, playground, playing fields, tennis club and public houses, all of which are within an easy walk. Forest Row is approximately 3 miles away and offers a wider range of shopping including two mini supermarkets and a number of independent shops, restaurants and public houses. Mainline rail: Commuter services to London Bridge, Cannon Street, Charing Cross and London Victoria are available from Cowden, Dormansland and East Grinstead stations.

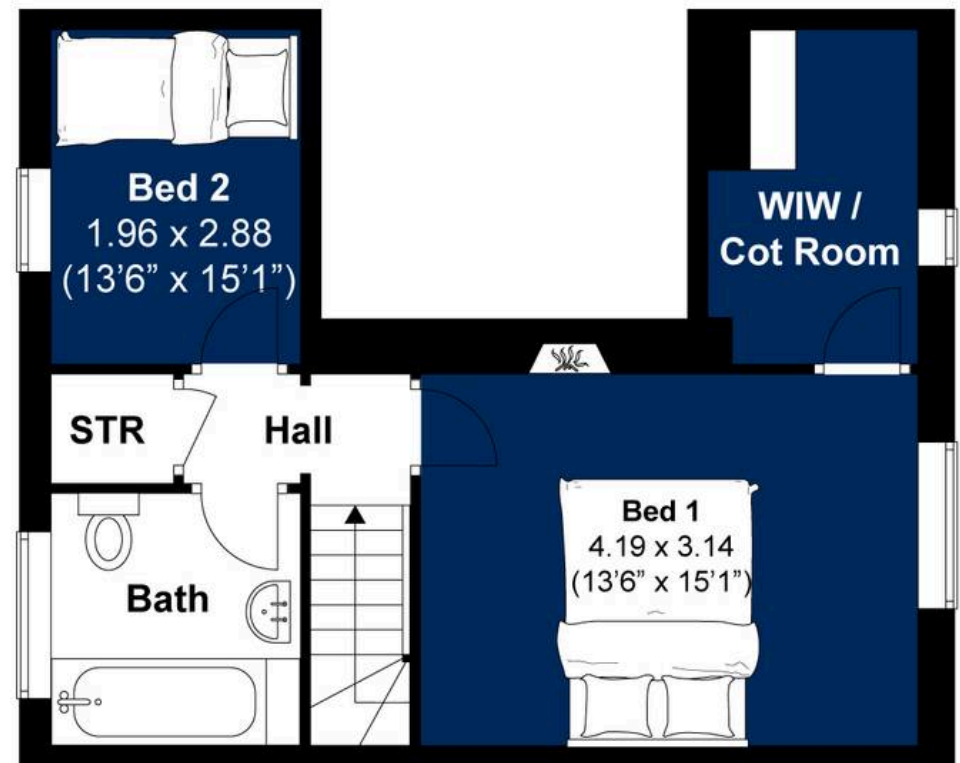


Newtons Hill, Hartfield

Approximately 59 sqm (633 sqft)



GROUND FLOOR



FIRST FLOOR



Disclaimer:

The measurements are approximate and are for illustration purposes only.
The dimensions are measured internally and in metres and feet. We do not take any responsibility for errors and/or omissions.
If you require further verification please discuss with the buyer/owner of the property.

