



COLE'S
ESTATE AGENTS

Walhatch Close, Forest Row

Guide Price £975,000

A stunning and vastly improved five bedroom family home, walking distance of Forest Row village. This immaculate home offers a wonderful open-plan kitchen/living/dining area with access to the garden, four bathrooms (two en-suite), a study, mezzanine floor and a utility room. Further benefits include off street parking, a double garage and charming gardens and sun terrace. Internal inspection highly recommended.

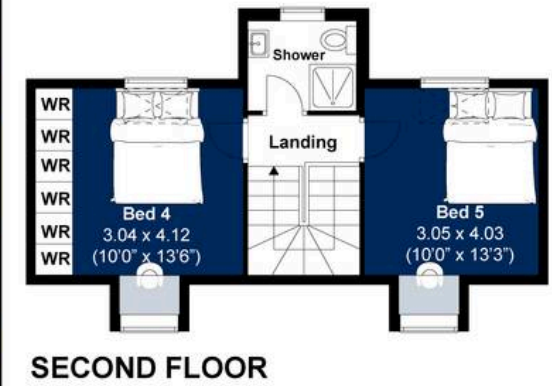
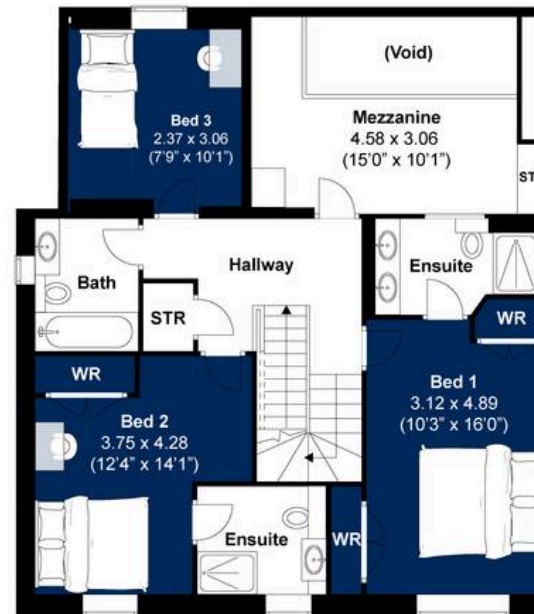
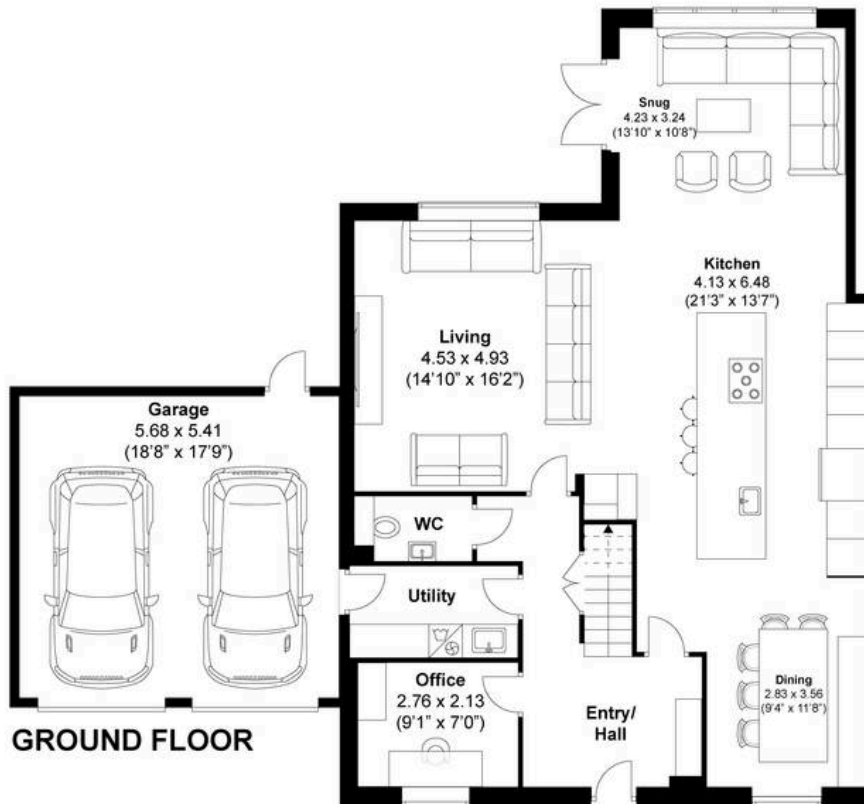
- Stunning Family Home
- Five Bedrooms
- Four Bathrooms
- Beautiful Open-Plan Living Space
- Utility Room And Study
- Double Garage And Driveway Parking
- Pretty Garden & Terrace
- Popular Village Location

Located in highly sought after Forest Row, on the outskirts of the Ashdown Forest. Forest Row High Street is within walking distance, offering a wide range of independent shops, restaurants and public houses that cater for every day needs. East Grinstead is approx. 4 miles distance and offers a further comprehensive range of shopping and supermarkets (Waitrose), as well as a mainline station with frequent services to central London.



Walhatch Close, Forest Row

Approximately 259.89 sqm (2797.36 sqft)



Disclaimer:

The measurements are approximate and are for illustration purposes only.
The dimensions are measured internally and in metres and feet. We do not take any responsibility for errors and/or omissions.
If you require further verification please discuss with the buyer/owner of the property.





Cole's Estate Agents

56 High Street, East Grinstead - RH19 3DE

01342 324616 • sales@colesestateagents.com • www.colesestateagents.com/



COLE'S
ESTATE AGENTS



Cole's Estate Agents

56 High Street, East Grinstead - RH19 3DE

01342 324616 • sales@colesestateagents.com • www.colesestateagents.com/



COLE'S
ESTATE AGENTS